

# EKI-2528I-LA

## 8FE Slim-type Unmanaged Industrial Ethernet Switch with Low Vac Power Input



### Features

- 8 x fast Ethernet ports with auto MDI/MDI-X
- Supports 10/100 Mbps auto negotiation
- Compact size with DIN rail and wall mount
- Supports redundant 12~48 V<sub>DC</sub> or 10~24 V<sub>AC</sub> power input
- Wide operating temperature range of -40 ~ 75°C
- C1D2 for hazardous locations

### Introduction

The EKI-2528I-LA provides a fast Ethernet solution. Power is delivered via either +12 ~ 48 V<sub>DC</sub> or 10~24V<sub>AC</sub> redundant input design. The EKI-2528I-LA comes with a compact metal enclosure, making it suitable for installation in narrow areas. The IP30-rated enclosure ensures protection against dusty industrial environments. The EKI-2528I-LA is also compliant with C1D2, making it perfect for harsh environments.

### Specifications

#### Communications

- **Standard IEEE** 802.3, 802.3u, 802.3x
- **LAN** 10/100BASE-TX
- **Transmission Distance** Up to 100 m
- **Transmission Speed** Up to 100 Mbps

#### Interface

- **Connectors** 8 x RJ45  
4-pin removable terminal (power)
- **LED Indicators** PWR1, PWR2  
10/100TX: link/activity, duplex

#### Power

- **Power Consumption** 5.1 Watts
- **Power Input** 12~48 V<sub>DC</sub> or 10~24 V<sub>AC</sub>, redundant dual inputs

#### Mechanism

- **Dimensions (W x H x D)** 30 x 140 x 95 mm (1.18" x 5.51" x 3.74")
- **Enclosure** IP30, metal housing with solid mounting kit
- **Mounting** DIN rail, wall

#### Protection

- **Reverse Polarity** Present
- **Overload Current** Present

#### Environment

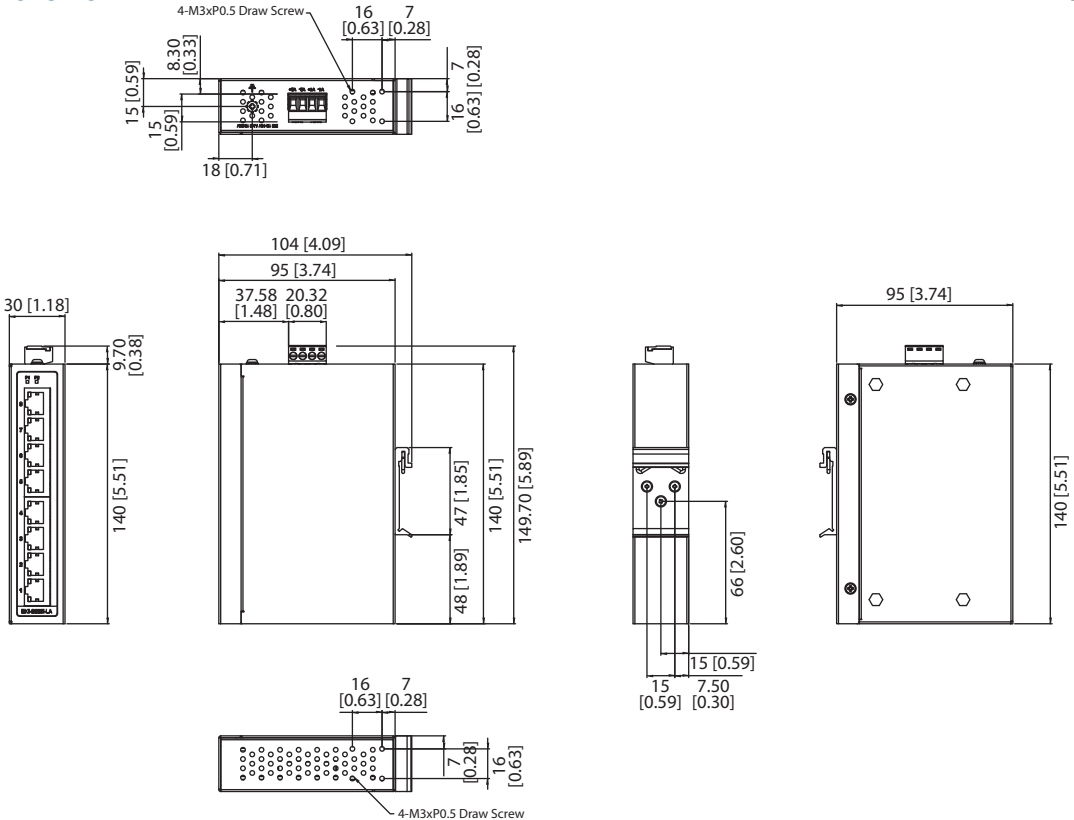
- **Operating Temperature** -40 ~ 75 °C (-40 ~ 167 °F)
- **Storage Temperature** -40 ~ 85 °C (-40 ~ 185 °F)
- **Operating Humidity** 10 ~ 95% (non-condensing)
- **Storage Humidity** 10 ~ 95% (non-condensing)
- **MTBF** TBD

#### Certification

- **Safety** EN 60950, UL60950, Class 1 Division 2
- **EMI** CE, FCC Class A
- **EMS** EN 61000-4-2 (Level 3)  
EN 61000-4-3 (Level 3)  
EN 61000-4-4 (Level 3)  
EN 61000-4-5 (Level 3)  
EN 61000-4-6 (Level 3)  
EN 61000-4-8 (Level 3)  
Shock IEC 60068-2-27  
Freefall IEC 60068-2-32  
Vibration IEC 60068-2-6

**Dimensions**

Unit: mm [in.]



**Panel Cut-out Dimensions: 30 x 140 x 95 mm ( 1.18" x 5.51" x 3.74" )**

**Ordering Information**

- **EKI-2528I-LA-AE** 8FE Slim-type Unmanaged Industrial Ethernet Switch with Low Vac Power Input